

Order guide: A (Major category), JP (category), A (Series), C2 (Material), H (Status), A (Types), W4 (Width), L8 (Length).  
 1 Material, 2 Status, 3 Types, 4 Width, 5 Length.  
 Please refer to the series code to choose your models and parameters.

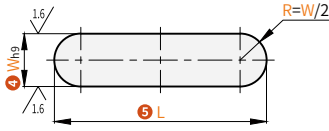
Code	Status 2	Types 3	Material 1	Hardness	Tensile Strength
AJPA -C2-HA	Quenched	Type A	S45C	25~40HRC	Above 700N/mm <sup>2</sup>
AJPA -C2-PA					
AJPA -S1-PA					
AJPA -C2-PB	General	Type B	S45C	—	Above 600N/mm <sup>2</sup>
AJPA -S1-PB			SUS304		
AJPA -C2-PC			Type C		
AJPA -S1-PC			SUS304		

Length Dimensional Tolerance

L	Tolerance
Shortest ~10	<sup>0</sup> / <sub>-0.36</sub>
11~18	<sup>0</sup> / <sub>-0.43</sub>
19~30	<sup>0</sup> / <sub>-0.52</sub>
31~50	<sup>0</sup> / <sub>-0.62</sub>
51~80	<sup>0</sup> / <sub>-0.74</sub>
81~110	<sup>0</sup> / <sub>-0.87</sub>

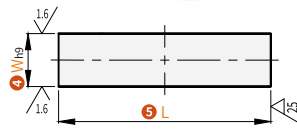
Type A

- AJPA -C2-HA
- AJPA -C2-PA
- AJPA -S1-PA



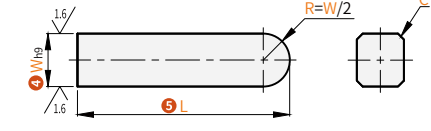
Type B

- AJPA -C2-PB
- AJPA -S1-PB

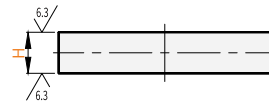
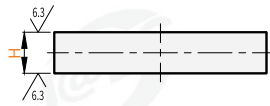


Type C

- AJPA -C2-PC
- AJPA -S1-PC



Other 12.5/



Perspective standard: first perspective

Quenched

Code	Model		L 5											H		C	
	W	h <sub>s</sub> 4	8	10	12	15	16	20	25	30	35	40	45	50	5	6	0.2
AJPA -C2-HA	4		8	10	12	15	16	20	25	30	35	40	45	50	4		0.2
	5	<sup>0</sup> / <sub>-0.030</sub>	10	12	15	16	18	20	25	30	35	40	45	50	5	<sup>0</sup> / <sub>-0.03</sub>	
	6		10	12	15	16	18	20	25	30	35	40	45	50	6		0.3
	8	<sup>0</sup> / <sub>-0.036</sub>	15	16	18	20	25	30	35	40	45	50	7	<sup>0</sup> / <sub>-0.036</sub>			
	10	<sup>0</sup> / <sub>-0.043</sub>	15	20	25	30	35	40	45	50	8	<sup>0</sup> / <sub>-0.09</sub>	0.5				

General

Code	Model		L 5											H		C												
	W	h <sub>s</sub> 4	6	8	10	15	20	22	25	28	30	35	40	45	50	55	60	70	80	85	90	100	110					
AJPA -C2-PA AJPA -S1-PA AJPA -C2-PB AJPA -S1-PB AJPA -C2-PC AJPA -S1-PC	2	<sup>0</sup> / <sub>-0.050</sub> (+0.080)	6	8	10	15	20	22	25	28	30	35	40	45	50	2	<sup>0</sup> / <sub>-0.050</sub> (+0.080)											
	3	<sup>0</sup> / <sub>-0.025</sub>	6	8	10	12	15	16	18	20	22	25	28	30	35	40	45	50	3	<sup>0</sup> / <sub>-0.025</sub>	0.2							
	4		8	10	12	15	16	18	20	22	25	28	30	35	40	45	50	55	4									
	5	<sup>0</sup> / <sub>-0.030</sub>	8	10	12	15	16	18	20	22	25	28	30	32	35	40	45	50	55	60	70	5	<sup>0</sup> / <sub>-0.030</sub>					
	6		8	10	12	15	16	18	20	22	25	28	30	32	35	40	45	50	55	60	70	6		0.3				
	7	<sup>0</sup> / <sub>-0.036</sub>	8	10	12	15	16	18	20	22	25	28	30	32	35	40	45	50	55	60	70	80	7	<sup>0</sup> / <sub>-0.036</sub>				
	8	<sup>0</sup> / <sub>-0.036</sub>	10	12	15	16	18	20	22	25	28	30	32	35	40	45	50	55	60	65	70	80	85	90	100	8		
	10		15	16	18	20	22	25	28	30	32	35	40	45	50	55	60	65	70	80	85	90	100	8				
	12		20	22	25	28	30	32	35	40	45	50	55	60	65	70	80	85	90	100	8							
	14		30	32	35	40	45	50	55	60	65	70	80	85	90	100	9	<sup>0</sup> / <sub>-0.090</sub>										
	15	<sup>0</sup> / <sub>-0.043</sub>	30	32	35	40	45	50	55	60	65	70	80	85	90	100	9		0.5									
	16		35	40	45	50	55	60	65	70	80	85	90	100	10													
	18		35	40	45	50	55	60	65	70	80	85	90	100	110	11	<sup>0</sup> / <sub>-0.110</sub>											

Parameters marked with \* are only applicable to the AJPA-S1-PA/PB/PC products of SUS304 material.