

Order guide: **A** (Major category) **JP** (Series) **D** (Material) **- C2** (Status) **- K** (Types) **- A** (Width) **- W8** (Length) **- L15**

① Material ② Status ③ Types ④ Width ⑤ Length

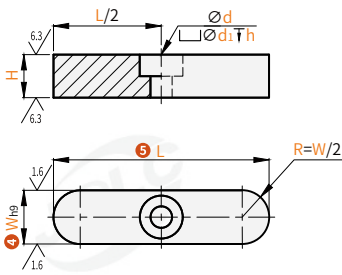
Please refer to the series code to choose your models and parameters.

Code	Status ②	Type ③	Material ①	Tensile Strength
AJPD-C2-KA	Center Countersunk	Type A	S45C	Above 600N/mm ²
AJPD-S1-KA			SUS304	
AJPD-C2-KB			S45C	
AJPD-S1-KB		SUS304		
AJPD-C2-KC		Type C	S45C	
AJPD-S1-KC			SUS304	
AJPD-C2-WA	Center Thread Countersunk		Type A	S45C
AJPD-S1-WA		SUS304		
AJPD-C2-WB		Type B		S45C
AJPD-S1-WB			SUS304	
AJPD-C2-WC			Type C	S45C
AJPD-S1-WC		SUS304		

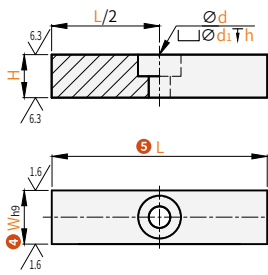
Length Dimensional Tolerance

L	Tolerance
Shortest-18	0 -0.43
19~30	0 -0.52
31~50	0 -0.62
51~80	0 -0.74
81~100	0 -0.87

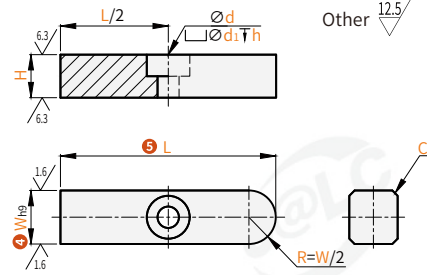
Center Countersunk
Type A: AJPD-C2-KA / AJPD-S1-KA



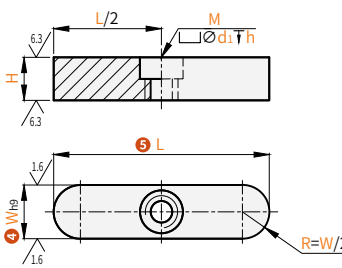
Type B: AJPD-C2-KB / AJPD-S1-KB



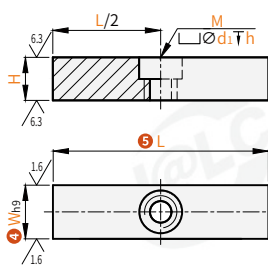
Type C: AJPD-C2-KC / AJPD-S1-KC



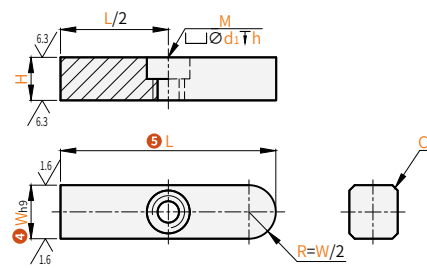
Center Thread Countersunk
Type A: AJPD-C2-WA / AJPD-S1-WA



Type B: AJPD-C2-WB / AJPD-S1-WB



Type C: AJPD-C2-WC / AJPD-S1-WC



Perspective standard: first perspective

Center Countersunk

Model		L ⑤	H	d	d ₁	h	C
Code	W _{h9} ④						
AJPD-C2-KA	8	15 20 25 30 35 40 45 50 55 60 65 70 80 85 90 100	7	3.3	6	3.3	0.3
AJPD-S1-KA	10	15 20 25 30 35 40 45 50 55 60 65 70 80 85 90 100	8	4.3	7.5	4.3	
AJPD-C2-KB	12	20 25 30 35 40 45 50 55 60 65 70 80 85 90 100	9	5.3	9.5	5.3	0.5
AJPD-S1-KB	14	30 35 40 45 50 55 60 65 70 80 85 90 100					
AJPD-C2-KC	15	30 35 40 45 50 55 60 65 70 80 85 90 100					
AJPD-S1-KC	16	40 45 50 55 60 65 70 80 85 90 100	10	6.3	11	6.3	
AJPD-S1-KC	18	40 45 50 55 60 65 70 80 85 90 100 110					

Center Thread Countersunk

Model		L ⑤	H	Detaching Thread M	Mounting Screw	d ₁	h	C
Code	W _{h9} ④							
AJPD-C2-WA	8	15 20 25 30 35 40 45 50 55 60 65 70 80 85 90 100	7	M4	M3	6	3.3	0.3
AJPD-S1-WA	10	15 20 25 30 35 40 45 50 55 60 65 70 80 85 90 100	8	M5	M4	8	4.3	
AJPD-C2-WB	12	20 25 30 35 40 45 50 55 60 65 70 80 85 90 100	9		M5	10	5.3	
AJPD-S1-WB	14	30 35 40 45 50 55 60 65 70 80 85 90 100						
AJPD-C2-WC	15	30 35 40 45 50 55 60 65 70 80 85 90 100	10	M5	M5	10	5.3	
AJPD-C2-WC	16	40 45 50 55 60 65 70 80 85 90 100						
AJPD-S1-WC	18	40 45 50 55 60 65 70 80 85 90 100 110						