

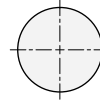
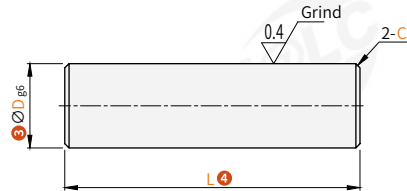
B AC A M1 - G1 D3 L8 BC5
 Major category (Series) 2 Surface treatment 4 Length
 Order guide (Category) 1 Material 3 Diameter 5 Optional processing
 Please refer to the series code to select the type and parameters for ordering.

Code	Type	Shaft tolerance	Material 1	Hardness	Surface treatment 2	Hard chrome plating	Coating thickness
BACA-M1W	Straight Rod Type	g6	SUJ2	High frequency quenching	—	—	—
BACA-M1G1					Hard chrome plating	HV850~	>5μm
BACA-S6W			SUS440C	Quenching hardness	—	—	—
BACA-S6G1					Hard chrome plating	HV850~	>5μm
BACA-C2W			S45C	—	—	—	—
BACA-C2G1						Hard chrome plating	HV850~



Remaining $\sqrt{6.3}$

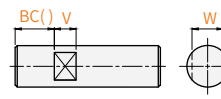
For roundness/straightness/perpendicularity/coaxiality/hardness variation/chrome layer distribution, please refer to the guide shaft product introduction.



Visual standards:
first perspective

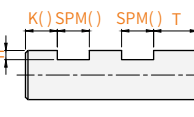
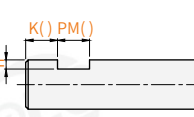
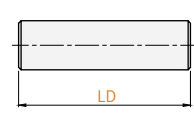
Code	Model	$\sqrt{D_{g6}}$	L 4	C
BACA-M1W BACA-M1G1 BACA-S6W BACA-S6G1 BACA-C2W BACA-C2G1	3	-0.002 -0.008	Minimum unit 1	0.2
	4	-0.004	10~500	
	5	-0.012	12~700	
	6	-0.005 -0.014	12~900	
	8	-0.005 -0.014	12~900	
	10	-0.005 -0.014	12~900	
	12	-0.005 -0.014	12~1020	0.5
	13	-0.005 -0.014	12~1020	
	15	-0.006 -0.017	20~1020	
	16	-0.006 -0.017	20~1020	
	18	-0.006 -0.017	25~1220	
	20	-0.006 -0.017	25~1220	
	25	-0.007 -0.020	30~1220	1.0
	30	-0.007 -0.020	30~1220	
	35	-0.009 -0.025	30~1520	
	40	-0.009 -0.025	40~1520	
	40	-0.009 -0.025	40~1520	
	50	-0.009 -0.025	60~1520	

Code 5	Optional icons	Selection method																																			
BC()	Add 1 wrench slot	BC5 Minimum unit 1 Applicable to D5 and above specifications <table border="1"> <thead> <tr> <th>D</th> <th>W</th> <th>V</th> </tr> </thead> <tbody> <tr><td>6</td><td>5</td><td rowspan="2">6</td></tr> <tr><td>8</td><td>7</td></tr> <tr><td>10</td><td>8</td><td rowspan="2">11</td></tr> <tr><td>12</td><td>10</td></tr> <tr><td>13</td><td>11</td><td rowspan="2">16</td></tr> <tr><td>15</td><td>13</td></tr> <tr><td>16</td><td>14</td></tr> <tr><td>18</td><td>16</td></tr> <tr><td>20</td><td>17</td></tr> <tr><td>25</td><td>22</td><td rowspan="2">21</td></tr> <tr><td>30</td><td>27</td></tr> <tr><td>35</td><td>30</td></tr> <tr><td>40</td><td>36</td></tr> <tr><td>50</td><td>41</td></tr> </tbody> </table>	D	W	V	6	5	6	8	7	10	8	11	12	10	13	11	16	15	13	16	14	18	16	20	17	25	22	21	30	27	35	30	40	36	50	41
	D	W	V																																		
6	5	6																																			
8	7																																				
10	8	11																																			
12	10																																				
13	11	16																																			
15	13																																				
16	14																																				
18	16																																				
20	17																																				
25	22	21																																			
30	27																																				
35	30																																				
40	36																																				
50	41																																				

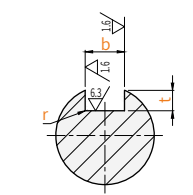
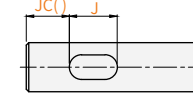


可选加工

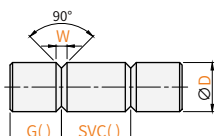
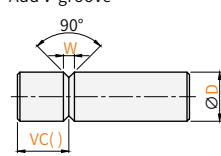
Code 6	Optional icons	Selection method										
LD	Change of L dimension tolerance	LD Minimum unit 0.1 L < 300 is changed to L ± 0.03; 300 ≤ L < 600 is changed to L ± 0.05; L ≥ 600 is changed to L ± 0.1;										
PM()	Add 1 plane	PM10-K8 Minimum unit 1 <table border="1"> <thead> <tr> <th>D</th> <th>h</th> </tr> </thead> <tbody> <tr><td>3-5</td><td>0.5</td></tr> <tr><td>6-18</td><td>1</td></tr> <tr><td>20-40</td><td>2</td></tr> <tr><td>50</td><td>3</td></tr> </tbody> </table>	D	h	3-5	0.5	6-18	1	20-40	2	50	3
D	h											
3-5	0.5											
6-18	1											
20-40	2											
50	3											
SPM()	Add 2 plane	SPM10-K8-T20 Minimum unit 1 <table border="1"> <thead> <tr> <th>D</th> <th>h</th> </tr> </thead> <tbody> <tr><td>3-5</td><td>0.5</td></tr> <tr><td>6-18</td><td>1</td></tr> <tr><td>20-40</td><td>2</td></tr> <tr><td>50</td><td>3</td></tr> </tbody> </table>	D	h	3-5	0.5	6-18	1	20-40	2	50	3
D	h											
3-5	0.5											
6-18	1											
20-40	2											
50	3											



JC()	Add 1 keyway	JC10-J10 Minimum unit 1 When JC=0, see the figure below D12, D16, D20, D25, D30 are suitable for this optional processing.
------	--------------	---



VC()	Add V-groove	VC8 Minimum unit 1 Applicable to D5 and above specifications <table border="1"> <thead> <tr> <th>D</th> <th>W</th> </tr> </thead> <tbody> <tr><td>6 · 8</td><td>2</td></tr> <tr><td>10-18</td><td>4</td></tr> <tr><td>20-25</td><td>6</td></tr> <tr><td>30-35</td><td>8</td></tr> <tr><td>40-50</td><td>12</td></tr> </tbody> </table>	D	W	6 · 8	2	10-18	4	20-25	6	30-35	8	40-50	12
D	W													
6 · 8	2													
10-18	4													
20-25	6													
30-35	8													
40-50	12													
SVC()	Add V-grooves on both ends	SVC180-G8 Minimum unit 1 Applicable to D5 and above specifications <table border="1"> <thead> <tr> <th>D</th> <th>W</th> </tr> </thead> <tbody> <tr><td>6 · 8</td><td>2</td></tr> <tr><td>10-18</td><td>4</td></tr> <tr><td>20-25</td><td>6</td></tr> <tr><td>30-35</td><td>8</td></tr> <tr><td>40-50</td><td>12</td></tr> </tbody> </table>	D	W	6 · 8	2	10-18	4	20-25	6	30-35	8	40-50	12
D	W													
6 · 8	2													
10-18	4													
20-25	6													
30-35	8													
40-50	12													



When selecting 2 or more optional processes, the interval between each process must be at least 2 mm.
 Optional processing may result in a lower hardness of the product.