

**B KLR - Q F38 R55 N10 BKTR**

Major category: **B** Series: **KLR - Q**

Order guide: Category 1 Crossbeam 2 Inner width 3 Bending radius 4 Number of chain links 5 Joint

Please refer to the series code to select the type and parameters for ordering.

**B KT R - F38**

Major category: **B** Series: **KT R - F38**

Order guide: Category 2 Inner width

Please refer to the series code to select the type and parameters for ordering.

**B KE R - Q**

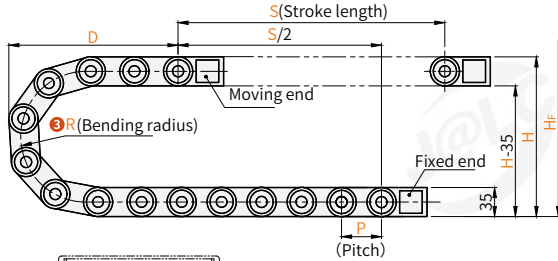
Major category: **B** Series: **KE R - Q**

Order guide: Category 1 Crossbeam

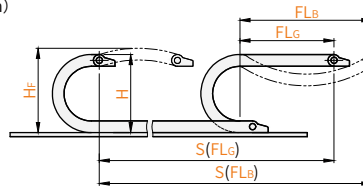
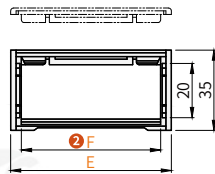
Please refer to the series code to select the type and parameters for ordering.

**Drag chain**

Code	Type	Feature	Inside height	Cross-beam	Cable placement form	Number of Cavities	Material	Color	Allowable temperature	Flame retardant grade	Accessory
<b>BKLR-Q</b>	General use	Reinforced type	20	Bridge	Inner and outer diameter open	Single cavity	Engineering plastic	Black	-20°C~80°C	UL94-V0	Joint
<b>BKLR-B</b>	General use	Reinforced type	20	Fully enclosed	Inner and outer diameter open	Single cavity	Engineering plastic	Black	-20°C~80°C	UL94-V0	Joint



- $H$  = Theoretical installation height
- $H_r$  = Actual installation height
- $D$  = Minimum distance when the drag chain is returned to the limit position
- $K = \pi \cdot R$  + Safety amount



- Overhead length
- $FL_G$  = Straight overhead length
- $FL_B$  = Safety collapsed waist overhead length

Visual standards: first perspective

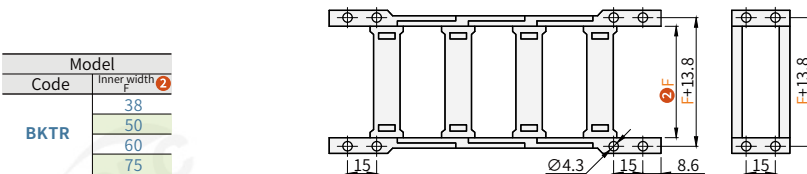
**22 links per meter of chain.**

Code	Model		Number of links N	Joint	Installation size			Actual installation height $H_r$	Outer width E	Pitch P	Max. cable diameter	Max. overhead length(m)	Max. allowable travel(m)	Max. permissible vertical suspension(m)
	Inner width F	Bending radius R			H	D	K							
<b>BKLR-Q</b> <b>BKLR-B</b>	38	(55)	1~	<b>BKTR</b>	145	120	290	175	56	46	17	1	60	25
		75			185	140	350	215						
		100			235	165	430	265						
		(55)			145	120	290	175						
		75			185	140	350	215						
		100			235	165	430	265						
	50	75	185	140	350	215	68							
		100	235	165	430	265								
		(55)	145	120	290	175								
		75	185	140	350	215	78							
		100	235	165	430	265								
		(55)	145	120	290	175								
60	75	185	140	350	215	93								
	100	235	165	430	265									
	(55)	145	120	290	175									
	75	185	140	350	215									
75	100	235	165	430	265									
	(55)	145	120	290	175									

**BKLR-B** without ( ) inside specifications.

**Joint**

Code	Type	Feature	Inside height	Material	Color	Allowable temperature	Flame retardant grade
<b>BKTR</b>	General use	Enhanced type	20	Engineering plastic	Black	-20°C~80°C	UL94-V0

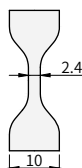
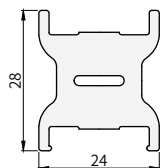


Visual standards: first perspective

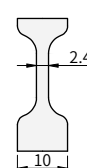
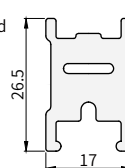
**Shim**

Code	Type	Feature	Inside height	Crossbeam	Material	Color	Allowable temperature	Flame retardant grade	Applicable drag chain code
<b>BKFR-Q</b>	General use	Enhanced type	20	Bridge	Engineering plastic	Black	-20°C~80°C	UL94-V0	<b>BKLR-Q</b>
<b>BKFR-B</b>	General use	Enhanced type	20	Fully enclosed	Engineering plastic	Black	-20°C~80°C	UL94-V0	<b>BKLR-B</b>

Bridge **BKFR-Q**



Fully enclosed **BKFR-B**



Visual standards: first perspective