

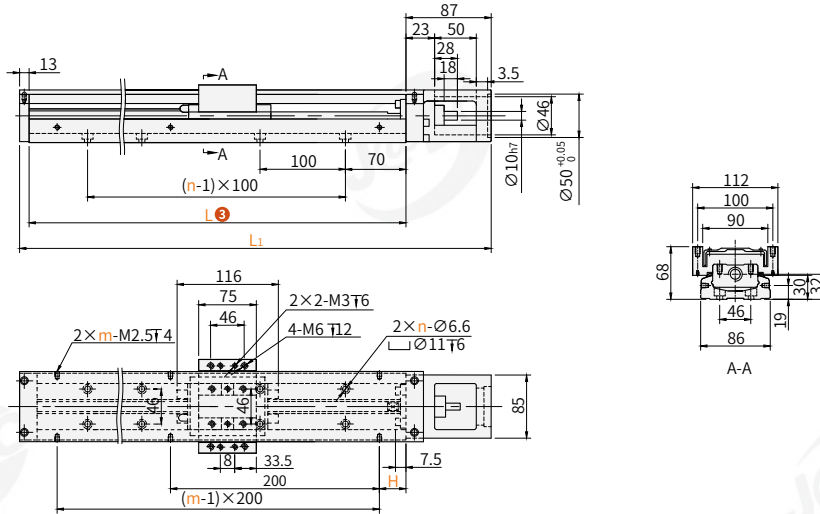
Order guide: **JKK86 - 10 - C - 150 - A1 - F0 - C - S0**

Code: 1 Lead, 2 Accuracy class, 3 Track length, 4 Slider type, 5 Motor connection flange, 6 Cover, 7 External photoelectric switch

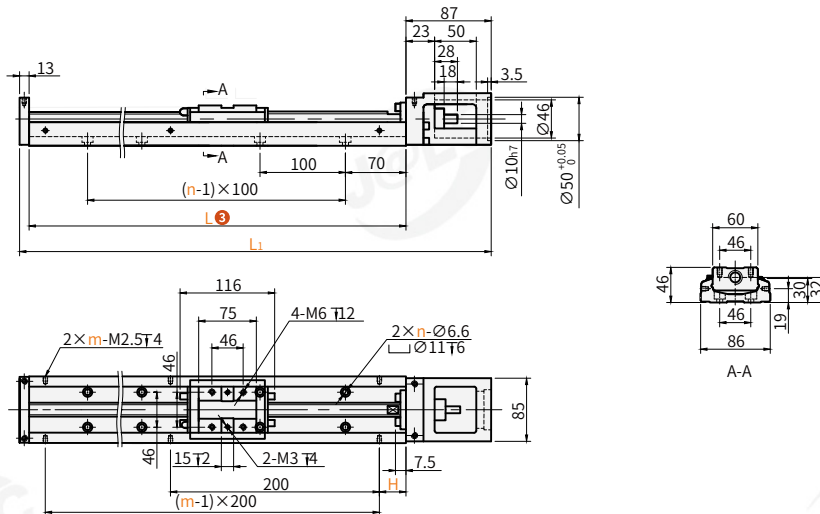
Please refer to the series code to select the type and parameters for ordering.

Code	Transmission	Guide rail	Operating environment	Slide type	Base width
JKK86	Screw transmission	Guideway-free	General environment	Standard	Base width 86mm

○ Covered



○ Unprotected



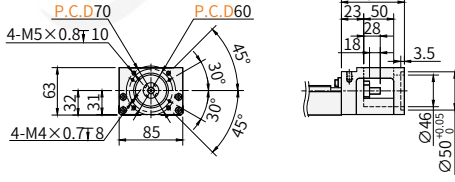
Visual standards:
first perspective

Model Code	Lead ①	Accuracy class ②	Track length L ③	Slider type ④	Motor connection flange ⑤	Cover ⑥	External photoelectric switch ⑦	Table length L1	H	m	n	Weight (kg)					
												Single slide	Double slide	Single slide without cover	Single slide with cover	Double slide without cover	Double slide with cover
JKK86	10 20	C (General grade) P (Precision grade)	340	A1 (Single slide) A2 (Double slide)	F0, F1, F2, F3, F4, F5, F6, F7	Not indicated: (none) With cover: C	Not indicated: (none) S0(Limit rail only) S2(Extreme rail + SX674)	440	70	3	2	210	100	5.7	6.5	6.5	7.3
			540					20	4	3	310	200	6.9	7.8	7.7	8.6	
			640					70	5	4	410	300	8	9	8.8	9.8	
			740					20	6	4	510	400	9.2	10.3	10	11.3	
			840					70	7	4	610	500	10.4	11.6	11.2	12.4	
			1040					9	5	5	810	700	11.6	13	12.4	13.8	

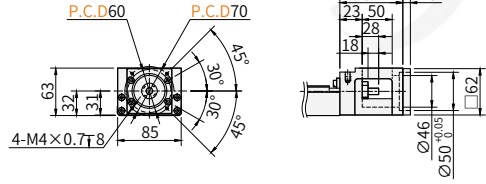
○ Please contact us if you need OMRON brand or PNP type for photoelectric switch.

Motor connection support and motor correspondence table

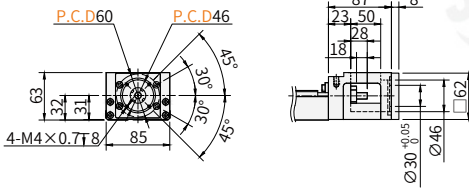
Motor connection
Support: F0



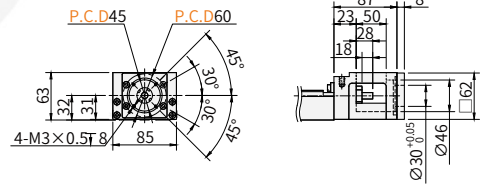
Motor connection
Support: F1



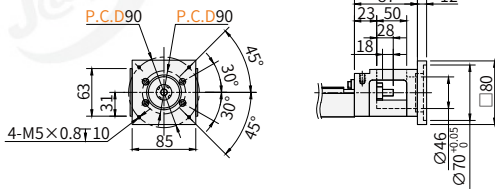
Motor connection
Support: F2



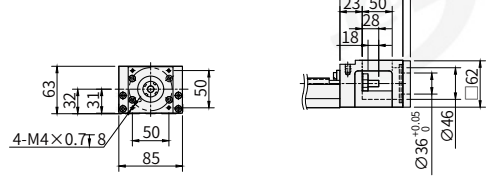
Motor connection
Support: F3



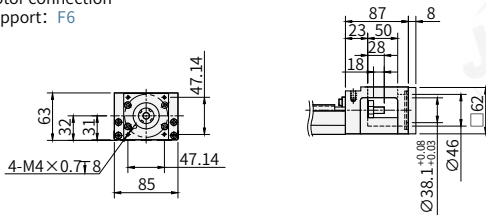
Motor connection
Support: F4



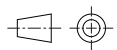
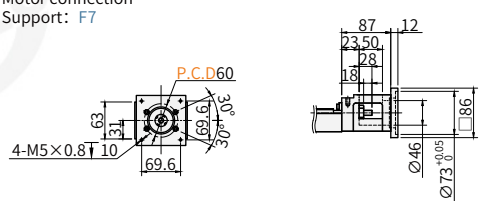
Motor connection
Support: F5



Motor connection
Support: F6



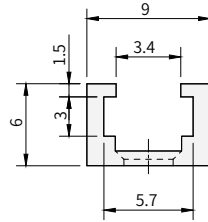
Motor connection
Support: F7



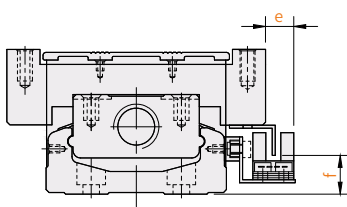
Visual standards:
first perspective

Code	Applicable motor type	Motor connection flange	Applicable brands		Output power
			Manufacturer's name	Specification	
JKK86	Servo motor	F0	Mitsubishi Motors	HC-KFS23	200W
		F0	Mitsubishi Motors	HC-KFS43	400W
		F1	Panasonic Corporation	MSM02	200W
		F1	Panasonic Corporation	MSM04	400W
		F2	Mitsubishi Motors	HC-PQ053	50W
		F2	Mitsubishi Motors	HC-PQ13	100W
		F2	Mitsubishi Motors	HC-KFS053	50W
		F2	Mitsubishi Motors	HC-KFS153	100W
		F3	Panasonic Corporation	MSM5AZ	50W
		F3	Panasonic Corporation	MSM01	100W
Stepper motor	Stepper motor	F4	Panasonic Corporation	MSM08	750W
		F6	Leadshine	57	-
		F7	Leadshine	86	-

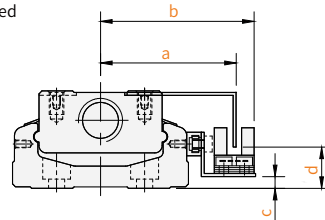
○ Limit switch/Mounting rail size chart
S0(Limit rail only)



S2(Extreme rail + SX674)
Covered



Unprotected



Visual standards:
first perspective

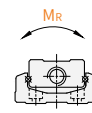
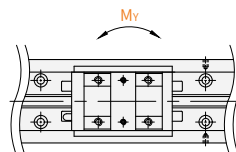
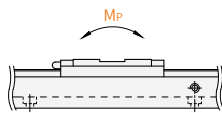
Code	External photoelectric switch 7	a	b	c	d	e	f
JKK86	S2(Extreme rail + SX674)	58	65.3	6	14.8	3	18

○ Accuracy class

Code	Track length L ③	Positional reproducibility		Position accuracy		Stroke parallelism		Maximum starting torque (N-cm)	
		General grade	Precision grade	General grade	Precision grade	General grade	Precision grade	General grade	Precision grade
JKK86	340								
	440								
	540				0.025		0.015		15
	640	±0.01	±0.005					10	
	740				0.030		0.020		17
	940				0.040		0.030		25

○ Allowable static moment

Code	Accuracy class	Allowable static moment					
		Linear guides					
		Pitch MP(N-m)		Partial pendulum MY (N-m)		Rolling MR(N-m)	
		Single slide	Double slide	Single slide	Double slide	Single slide	Double slide
JKK86	General grade precision grade	622	3050	622	3050	1507	3014



Visual standards:
first perspective

○ Allowable load

Code	Lead	Accuracy class	Basic load rating (N)			
			Ball screw		Linear guides	
			C (dynamic)	CO (static)	C (dynamic)	CO (static)
JKK86	10	General grade	3377	5625	31458	50764
		precision grade	3744	6243		
	20	General grade	2107	3234		
		precision grade	2410	2743		