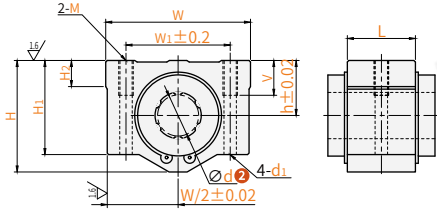


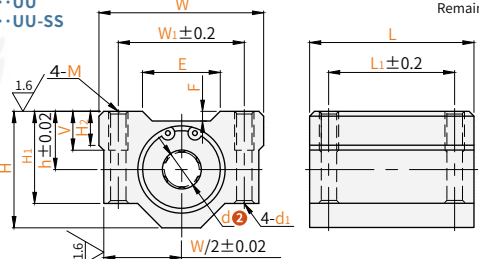
SC - **6** - **UU** - **M**
 1 Type 2 Nominal shaft diameter d 3 Nickel plating 4 Medium
 Order guide Please refer to the series code to select the type and parameters for ordering.

Code	Linear bearing type	Bearing model Code	Fixed base Material	Surface treatment	Operating ambient temperature
SC...UU-D	Short	LM...UUseries	Aluminum alloy	Natural color anodized	-15~80°C
SC...UU	Single liner	LM.../LM...UU/LM...AUUseries			
SC...UU-SS		SSL...UU-Sseries			
SC...UU-M	Medium	LM...UU-M/LM...AUU-Mseries			

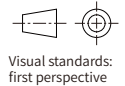
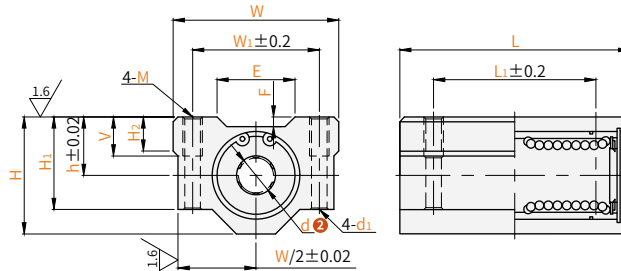
Short
SC...UU-D



Single liner
SC...UU
SC...UU-SS



Medium
SC...UU-M



Visual standards:
first perspective

Single liner

Code	Model	d	L	h	H	H ₁	H ₂	W	W ₁	M	d ₁	V	Basic rated load(N)		Weight (g)	
													C(Dynamic)	Co(Static)		
SC...UU-D	8	0-0.009	15.4	11	22	18	6	34	24	M4	3.4	8	260	375	36	
	10		19.5	13	26	21	8	40	28	M5	4.3	12	370	545	63	
	12		20.5	15	28	24	8	42	30.5				410	595	74	
	16		23.5	19	38.5	32.5	9	50	36	770	1175	132				
	20	0-0.010	27.4	21	41	35	11	54	40	M6	5.2	18	880	1365	170	
	25		37.4	26	51.5	42	12	76	54	M8	7		975	1565	405	
	30		40.9	30	59.5	49	15	78	58			1565	2735	495		
	35		45.4	34	68	54	18	90	70	1665	3135	790				
	40		0-0.012	56.4	40	78	62	20	102	80	M10	8.7	25	2155	4015	1220
	50			68.9	52	102	80	25	122	100				3815	7935	2300

1N≈0.102kgf

Single liner

Code	Model	d	L	L ₁	h	H	H ₁	H ₂	W	W ₁	M	d ₁	V	E	F	Basic rated load(N)		Weight (g)
																C(Dynamic)	Co(Static)	
SC...UU SC...UU-SS	8	0-0.009	30	18	11	22	18	6	34	24	M4	3.4	8	16	0.4	260	385	50
	10		35	21	13	26	21	8	40	28						370	545	90
	12		36	26	15	28	24	8	42	30.5	M5	4.3	12	17.5	0.85	410	595	100
	13		39			30	24.5	44	33	19						515	785	125
	16		44	34	19	38.5	32.5	9	50	36	M6	5.2	18	21	0.5	770	1185	250
	20		50	40	21	41	35	11	54	40						880	1375	250
SC...UU	25	0-0.010	67	50	26	51.5	42	12	76	54	M8	7	18	39.9	0.75	985	1575	595
	30		72	58	30	59.5	49	15	78	58						1575	2745	730
	35		80	34	68	54	18	90	70	1660	3130	995						
	40		90	60	40	78	62	20	102	80	2150	4010	1585					

1N≈0.102kgf

Medium

Code	Model	d	L	L ₁	h	H	H ₁	H ₂	W	W ₁	M	d ₁	V	E	F	Basic rated load(N)		Weight (g)
																C(Dynamic)	Co(Static)	
SC...UU-M	6	0-0.010	35	24	9	18	15	6	30	20	M4	3.4	8	12	0.4	225	310	48
	8		43	28	11	22	18	8	34	24						310	450	78
	10		43	34	13	26	21	8	40	28	M5	4.3	12	15.5	0.85	505	715	142
	12		43	38	15	28	24	8	42	30.5						630	810	144
	16		63	48	19	38.5	32.5	9	50	36	M6	5.2	18	21	0.5	1160	1445	323
	20		73	56	21	41	35	11	54	40						1550	2065	382
	25		93	66	26	51.5	42	12	76	54	M8	7	18	36	1	1725	3065	866

1kgf=9.81N