

C AL G 0.8 - 20 - 2 - P5 - R

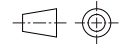
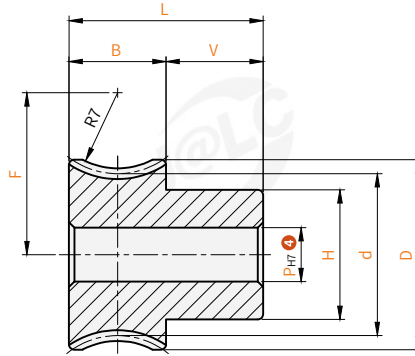
Major category Series 2 Tooth number 4 Shaft hole diameter
 Order guide Category 1 Module 3 Heads 5 Spiral direction
 Please refer to the series code to select the type and parameters for ordering.

C AL H 0.8 - 1 - P6 - R

Major category Series 2 Heads 4 Shaft hole diameter
 Order guide Category 1 Module 5 Spiral direction
 Please refer to the series code to select the type and parameters for ordering.

Worm gear

Code	Type	Body material	Hardness of tooth surface	Surface treatment
CALG	Worm gear	CAC502	—	—



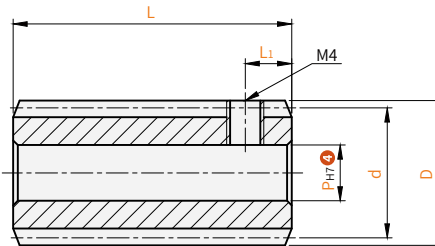
Visual standards: first perspective

Accuracy New JIS B 1702-1 Grade 8

Model		Tooth number	Heads	Shaft bore diameter _{P_{H7}}	Spiral direction	d	D	B	H	L	V	F meshing center distance	Clearance (mm)	Allowable torque (N·m)	Reduction ratio	
Code	Module			Round hole												
CALG	0.8	20	2	5	R(Right)	16.11	17.6		12			15	0.04-0.22	0.86	1/10	
		30	1	5		24.04	25.6		18		19	1.89		1/30		
			2	5		24.16		9	18	18	9	1.87		1/15		
		40	1	6		32.05	33.6		20		23	3.24		1/40		
		50	1	8		40.06	41.6		25		27	4.9		1/50		
	1.0	20	1	6		20.05	23		16		18			0.06-0.24	1.58	1/20
			2	6		20.16									1.54	1/10
		30	1	6		30.07	33	10	20	20	10	23	3.38		1/30	
			2	6		30.24									3.35	1/15
		40	1	8		40.08	43		26		28	5.79	1/40			
	50	1	8	50.1	53		30		33	8.76	1/50					

Worm

Code	Type	Body material	Hardness of tooth surface	Surface treatment
CALH	Worm gear	S45C	Below HRC12	Blackening



Visual standards: first perspective

Accuracy New JIS B 1702-1 Grade 8

Model		Heads	Shaft bore diameter _{P_{H7}}	Spiral direction	Feed angle	d	D	L	L ₁
Code	Module		Round hole+threaded hole						
CALH	0.8	1	6	R(Right)	3°17'	14	15.6	30	5
		2			6°34'				
	1.0	1			3°35'	16	18	32	
		2			7°11'				