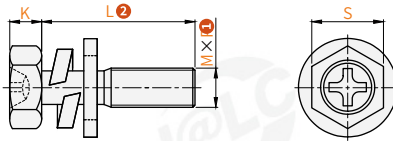


E AB E - M3 - L6
 Major category Series Thread specification Length

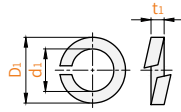
Order guide (Category) 1 Thread specification
 Please refer to the series code to select the type and parameters for ordering.

○ Crossed hex head recessed combination screw

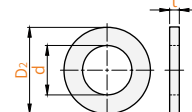
Code	Thread	Material	Surface treatment	Strength class
EABE	Coarse thread	SUS304	—	A2-70



○ Spring washer



○ Flat washer

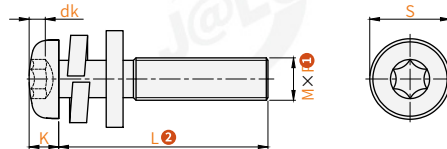


Visual standards:
first perspective

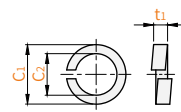
Model		L ²											P	K	S	Spring washer			Flat washer							
Code	M ¹												Pitch	K	S	D ₁	d ₁	t ₁	D ₂	d	t					
EABE	3	6	8	10	12	16												0.5	2.1	5.5	5.43	2.83	0.9	7	2.83	0.5
	4	6	8	10	12	16	18	20	25	30	35	40	45	50	0.7	3	7	6.2	3.78	1.2	9	3.78	0.8			
	5	8	10	12	16	18	20	25	30	35	40	45	50	55	60	0.8	3.74	8	8.3	4.75	1.4	10	4.75	1		
	6	10	12	16	18	20	25	30	35	40	45	50	55	60	1.0	4.24	10	10.3	5.71	1.7	12	5.71	1.6			
	8	12	16	18	20	25	30	35	40	45	50	55	60	65	1.25	5.54	13	12.3	7.64	2.1	16	7.64				

○ Hexalobular socket pan head combination screw

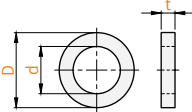
Code	Thread	Material	Surface treatment	Strength class
EABF	Coarse thread	SUS304	—	A2-70



○ Spring washer



○ Flat washer



Visual standards:
first perspective

Model		L ²														P	S (Screw head diameter)					
Code	M ¹															Pitch	max. value	min. value				
EABF	4	6	8	10	12	14	16	18	20	25	30	35	40					0.7	8	7.64		
	5	8	10	12	14	16	18	20	22	25	30	35	40	45	50					0.8	9.5	9.14
	6	10	12	14	16	18	20	22	25	30	35	40	45	50					1	12	11.57	
	8	12	14	16	18	20	22	25	30	35	40	45	50					1.25	16	15.57		

Code	K (Screw head thickness)		dk (Groove depth)		D	d	t	C1	C2	t1
	max. value	min. value	max. value	min. value	(Flat washer outer ring diameter)	(Flat washer inner ring diameter)	(Flat washer thickness)	(Spring washer outer diameter)	(Spring washer inner diameter)	(Spring washer thickness)
EABF	3.1	3.92	1.66	1.27	9	3.72	0.8	7	2.2	1.1
	3.7	3.52	1.91	1.52	10	4.66	1	8.5	2.6	1.3
	4.6	4.3	2.42	2.02	12	5.62	1.6	11.4	3.2	1.6
	6	5.7	3.18	2.78	16	7.53	2	14.3	4	2