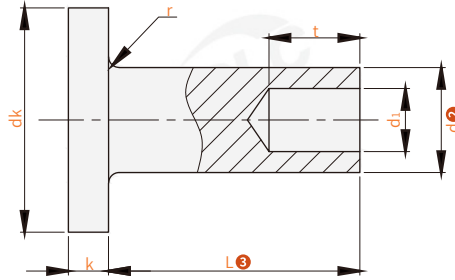


E (Major category) | MJ (Category) | L (Series) | S1 (Material) | d1.4 (Diameter) | L3 (Length)

Order guide: **1** Material | **2** Diameter | **3** Length

Please refer to the series code to select the type and parameters for ordering.

Code	Standard No.	Material 1
EMJL-S1		SUS304
EMJL-A	GB875-1986	Aluminum



Perspective standard:
first perspective

Model		L3																																		
Code	d 2																																			
EMJL-S1 EMJL-A	1.4	2	2.5	3	3.5	4	5	6	7																											
	2	2	2.5	3	3.5	4	5	6	7	8	9	10	11	12	13																					
	2.5				3	3.5	4	5	6	7	8	9	10	11	12	13	14	15																		
	3				3.5		4	5	6	7	8	9	10	11	12	13	14	15	16	17	18	19	20	22	24	26	28									
	4				5			6	7	8	9	10	11	12	13	14	15	16	17	18	19	20	22	24	26	28	30	32	34	36	38	40				
	5				6			7	8	9	10	11	12	13	14	15	16	17	18	19	20	22	24	26	28	30	32	34	36	38	40	42	44	46	48	50
	6				7			8	9	10	11	12	13	14	15	16	17	18	19	20	22	24	26	28	30	32	34	36	38	40	42	44	46	48	50	
	8				9			10	11	12	13	14	15	16	17	18	19	20	22	24	26	28	30	32	34	36	38	40	42	44	46	48	50			
	10				10			11	12	13	14	15	16	17	18	19	20	22	24	26	28	30	32	34	36	38	40	42	44	46	48	50				

Code	dk		Hole diameter dh	K		d1		t		r
	Min. value	Max. value		Min. value	Max. value	Min. value	Max. value	Min. value	Max. value	
EMJL-S1 EMJL-A	0.65	0.77	1.5	0.42	0.58	0.65	0.77	1.16	1.64	0.1
	0.94	1.12	2.1	0.52	0.68	0.94	1.12	1.76	2.24	
	1.44	1.62	2.6	0.72	0.88	1.44	1.62	2.26	2.74	
	1.94	2.12	3.1	0.87	1.13	1.94	2.12	2.76	3.24	
	2.44	2.52	4.1	1.07	1.33	2.44	2.52	3.71	4.29	0.3
	3.42	3.46	5.2			3.42	3.46	4.71	5.29	
	4.42	4.16	6.2	1.37	1.63	4.42	4.16	5.71	6.29	
	5.92	4.66	8.2			5.92	4.66	7.65	8.35	
7.4	7.7	10.3			7.4	7.7	9.65	10.35		

Rivet