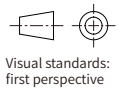
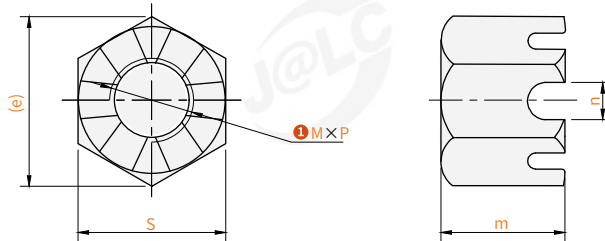


Please refer to the series code to select the type and parameters for ordering.

Hexagon slotted nut

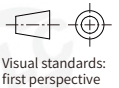
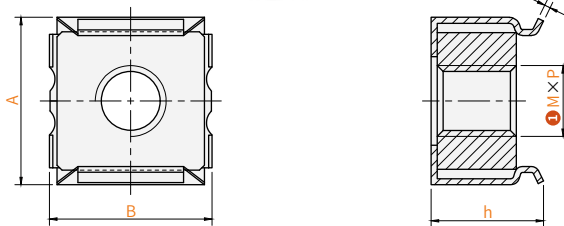
Code	Material	Thread	Applicable standard
EMLX	SUS304	Coarse thread	GB/T 6178-1986



Model		Pitch P	m	S	e	n(min)
Code	M					
EMLX	6	1.0	7.7	10	11.05	2
	8	1.25	9.8	13	14.38	2.5
	10	1.5	12.4	16	17.77	2.8
	12	17.5	15.8	18	20.03	3.5
	16	2.0	50.8	24	26.75	4.5

Cage nut

Code	Material	Thread
EMLY	SUS304	Coarse thread



Model		Pitch P	h	t	A	B	Applicable thickness of plate
Code	M						
EMLY	5	0.8	8.7	0.45	13.2	13.2	0.7-1.6
	6	1.0	8.8		13.3	13.3	
	8	1.25	10.4	0.5	16.7	16.7	1.0-1.7
	10	1.5	10.9		16.8	16.8	