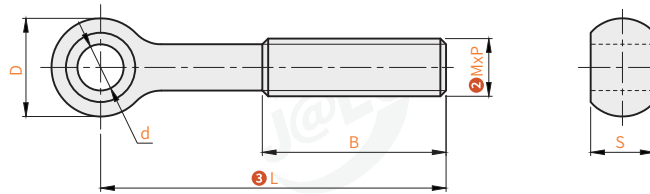


E SL D - C2 - M3 - L6
 Order guide Major category Series ② Thread ③ Length
 (Category) ① Material

Ⓞ Please refer to the series code to select the type and parameters for ordering.

Ⓞ Loose knuckle bolt

Code	Type	Material	ST
ESLC	Loose knuckle bolt	SUS304	—



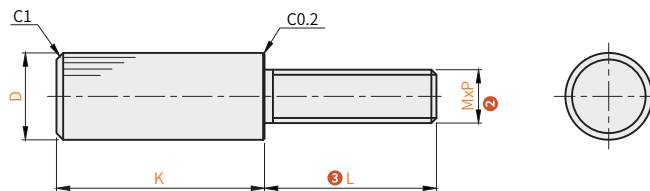
Perspective standard:
first perspective

Model		L ③	B	P Pitch	d	S		D
Code	M ②							
ESLC	5	25 30 35 40	Full teeth	0.8	4	4.4		8.4
		45 50 60 70	40					
	6	20 25 30 45	Full teeth	1	5	5.3	+0.2 -0.1	11.2
		50 55 60 70 90 100	40					
	8	20 25 30 35 40 45 50 55	Full teeth	1.25	6	+0.4 +0.1	7.2	13.7
		60 65 70 80 90 100 110 120 130 140	40					
	10	25 30 35 40 45 50	Full teeth	1.5	8		9.2	16.7
		55 65 70 80 90 100 120 130 140 150	50					
	12	40 45 50 60 65 70	Full teeth	1.75	10		11.2	19.6
		75 80 85 90 100 110 120 130 140 150	60					
16	60 70	Full teeth	2.0	12		17.7	± 0.3	
	90 100 110 120 130 140 150 160	70						
20	80 90	Full teeth	2.5	16	+0.5 +0.1	21.7	33.7	
	100 110 120 130 140 150	80						

Ⓞ V size is a reference value

Ⓞ Knurled bolt

Code	Type	Material ①	ST
ESLD-C2	Knurled bolt	S45C	Nickel plated
ESLD-S3		SUS303	—



Perspective standard:
first perspective

Model		L ③	P Pitch	D	K
Code	M ②				
ESLD-C2 ESLD-S3	3	6 10	0.5	5.5	10
	4	6 10 16	0.7	7	16
	5	10 16 20	0.8	8.5	20
	6	10 16 20 25 30	1.0	10	30
	8	20 25 30	1.25	13	36
	10	20 25 30 40	1.5	16	40